

County Silo Snacker Range



CENTRE DISCHARGE

High capacity County Range Silos designed and engineered with a versatile, adjustable chute to facilitate feed discharge at height for filling snackers, loader buckets, bags and tote bins.

A choice of models provide excellent mass feed flow for pelleted or meal products.

S1 Snacker - 60° cone suitable for free flowing, pelleted feeds and wholegrains

S3 Snacker - 67° cone suitable for meals and blends with poorer flow characteristics

Special Features

- Available on selected silos with volumes from 19m³ to 54m³
- Clearance under cone plate: 2600mm
- Versatile, telescopic/multi position chute
- Galvanised or Plasteel Finish™
- Smooth internal walls
- Pressure relief valve
- AutoVent
- FloView™ SafetyClean panel
- External, lockable filler pipe
- Heavy duty top filler bend (5mm wall thickness)
- Independent exhaust pipe
- Level indicators
- Crane lifting points
- Galvanised support structure designed to Eurocode 1, Part 1-4
- CE Marked

Range of 6 Plasteel™ Finishes

Juniper Green
BS 12B29

Olive Green
BS 12B27

Moorland Green
BS 12B21

Merlin Grey
BS 18B25

Slate Blue
BS 18B29

Vandyke Brown
BS 08B29

Colours may not be accurately reproduced in printing, colour samples available on request



Model Number	Overall Height	Barrels	Dia. (m)	Capacity (m ³)	Meal @ 577 kg/m ³	Pellets @ 650 kg/m ³	Grain @ 693 kg/m ³	Base Size (m)
S1C2615C	5.04m	1.0	2.87m	15.10m ³	8.71t	9.82t	10.46t	3.5 x 3.5 x 0.20m
S1C2619C	5.62m	1.5	2.87m	19.00m ³	10.96t	12.35t	13.17t	3.5 x 3.5 x 0.20m
S1D2622C	5.59m	1.0	3.35m	22.30m ³	12.87t	14.50t	15.45t	4.0 x 4.0 x 0.25m
S1C2623C	6.25m	2.0	2.87m	22.90m ³	13.21t	14.89t	15.87t	3.5 x 3.5 x 0.25m
S1C2627C	6.83m	2.5	2.87m	26.80m ³	15.46t	17.42t	18.57t	3.5 x 3.5 x 0.25m
S1D2628C	6.24m	1.5	3.35m	27.60m ³	15.93t	17.94t	19.13t	4.0 x 4.0 x 0.25m
S1C2631C	7.46m	3.0	2.87m	30.80m ³	17.77t	20.02t	21.34t	3.5 x 3.5 x 0.30m
S1D2633C	6.80m	2.0	3.35m	32.90m ³	18.98t	21.39t	22.80t	4.0 x 4.0 x 0.30m
S1C2635C	8.09m	3.0	2.87m	34.80m ³	20.08t	22.62t	24.12t	3.5 x 3.5 x 0.35m
S1D2638C	7.38m	2.5	3.35m	38.30m ³	22.10t	24.90t	26.54t	4.0 x 4.0 x 0.30m
S1C2639C	8.72m	4.0	2.87m	38.80m ³	22.39t	25.22t	26.89t	3.5 x 3.5 x 0.35m
S1D2644C	8.01m	3.0	3.35m	43.20m ³	24.93t	28.08t	33.96t	4.0 x 4.0 x 0.30m
S1D2649C	8.59m	3.5	3.35m	49.00m ³	28.27t	31.85t	33.96t	4.0 x 4.0 x 0.35m
S1D2654C	9.22m	4.0	3.35m	54.30m ³	31.33t	35.30t	37.63t	4.0 x 4.0 x 0.40m
S3B2613C	4.68m	1.0	2.57m	13.00m ³	7.50t	8.45t	9.01t	3.2 x 3.2 x 0.20m
S3B2616C	5.26m	1.5	2.57m	16.10m ³	9.29t	10.47t	11.16t	3.2 x 3.2 x 0.20m
S3B2619C	5.89m	2.0	2.57m	19.20m ³	11.08t	12.48t	13.31t	3.2 x 3.2 x 0.20m
S3B2622C	6.47m	2.5	2.57m	22.40m ³	12.92t	14.56t	15.52t	3.2 x 3.2 x 0.25m
S3B2626C	7.1m	3.0	2.57m	25.50m ³	14.71t	16.58t	17.67t	3.2 x 3.2 x 0.25m
S3C2621C	6.42m	1.5	2.87m	21.10m ³	12.17t	13.72t	14.62t	3.5 x 3.5 x 0.25m
S3C2625C	7.05m	2.0	2.87m	25.00m ³	14.43t	16.25t	17.33t	3.5 x 3.5 x 0.25m
S3D2626C	6.59m	1.0	3.35m	25.60m ³	14.77t	16.64t	17.74t	4.0 x 4.0 x 0.25m
S3C2629C	7.63m	2.5	2.87m	29.00m ³	16.73t	18.85t	20.10t	3.5 x 3.5 x 0.25m
S3D2631C	7.16m	1.5	3.35m	31.00m ³	17.89t	20.15t	21.48t	4.0 x 4.0 x 0.25m
S3D2636C	7.80m	2.0	3.35m	36.30m ³	20.95t	23.60t	25.16t	4.0 x 4.0 x 0.30m
S3D2642C	8.37m	2.5	3.35m	41.60m ³	24.00t	27.04t	28.83t	4.0 x 4.0 x 0.35m
S3D2647C	9.01m	3.0	3.35m	47.00m ³	27.12t	30.55t	32.57t	4.0 x 4.0 x 0.35m

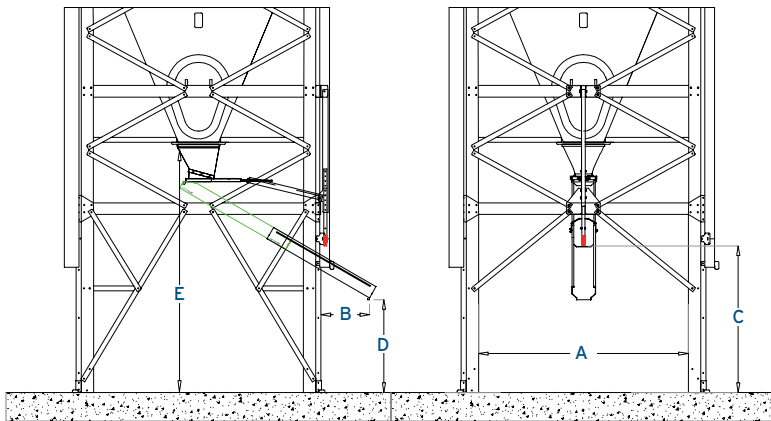
Important Notes

* O/A Silo height is based on the 2600mm clearance under the cone.

** Silo capacity indicated is the true volume of the entire shell of the silo. Please allow extra capacity in the silo you chose to allow for:

- Variations in product density due to aeration of product during pneumatic silo filling.
- Variable density of the product due to manufacturing specification.
- Extra spare capacity. As a general rule we recommend you chose a silo with a minimum additional capacity of 20% over and above the size of loads you are planning to have delivered.

Technical Information



	A (mm) Distance between legs	B (mm) Projection from legs	C (mm) Clearance under chute - fully retracted	D (mm) Clearance under chute - fully extended	E (mm) Cone plate height
2.87m Dia	1840	676	1520	964	2600
3.35m Dia	2181	506	1520	964	2600

All dimensions are relevant to both S1, 60° and S3 67° cone silos

Getting the Silo Ready to Use

- It is your responsibility as the customer to provide a suitable ready mix concrete with grade C30 base, dimensions as per recommendation.
- The County Range Silos are delivered and erected by vehicles fitted with hydraulic tipping gear which erects the silo onto the concrete base.
- The driver/fitter will drill the concrete base and bolt the silo into position using expansion type anchor bolts.
- Your silo is now ready to use.

